

Configuring the Bridge for Wireless Access

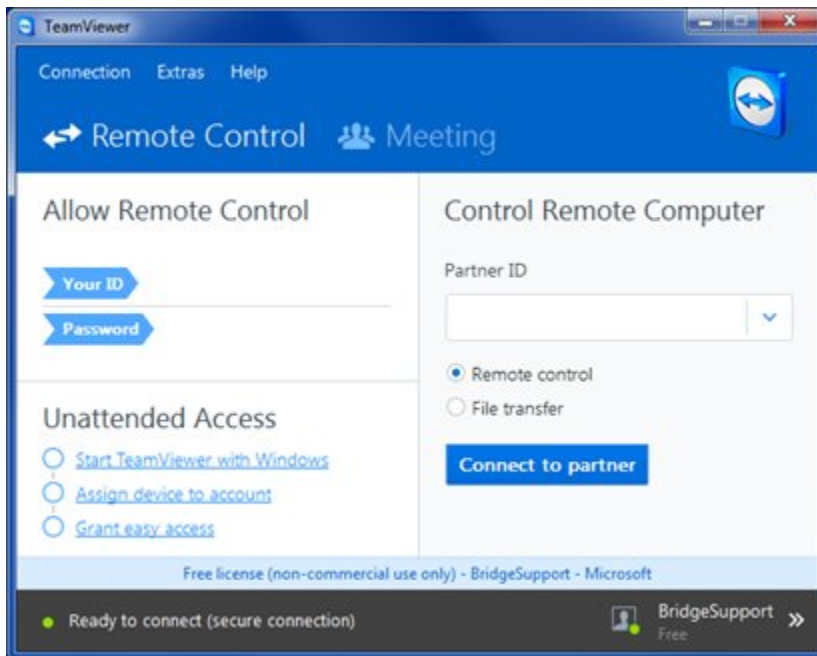
The Bridge is best used with a wired connection to your network but if you don't want to do that then it is possible to have the Bridge connect wirelessly to your network.

Warning: The only way to enable wireless support on the Bridge is by interacting with the Bridge as a Windows computer. If you do this, you must make only the minimal changes necessary for network connectivity. There are many settings in Windows and the software that runs on the Bridge that must not be modified.

Before you can enable wireless connectivity of the Bridge it must first be on your network and that means plugging it into the network cable and the cable into your router. Once you have done that and verified that the Bridge has started up and is on the network – use your router's device table or the Bridge software to check.

If you can use, even if only temporarily, a wired connection then you can use TeamViewer to connect to the Bridge and then interact with its Windows environment to enable wireless and get the Bridge on to your wireless network.

Team Viewer is a free software package that can be downloaded on many different platforms. Visit www.TeamViewer.com, download for your platform, and install. After starting TeamViewer, enter as the "Partner ID" with what is printed on the information card included with the Bridge hardware.



After you press "Connect to partner" TeamViewer asks for a password and that too is printed on the information card.

If it doesn't connect make sure the Bridge is powered on, you have waited several minutes, and you have plugged a network cable into the Bridge so it is on your network.

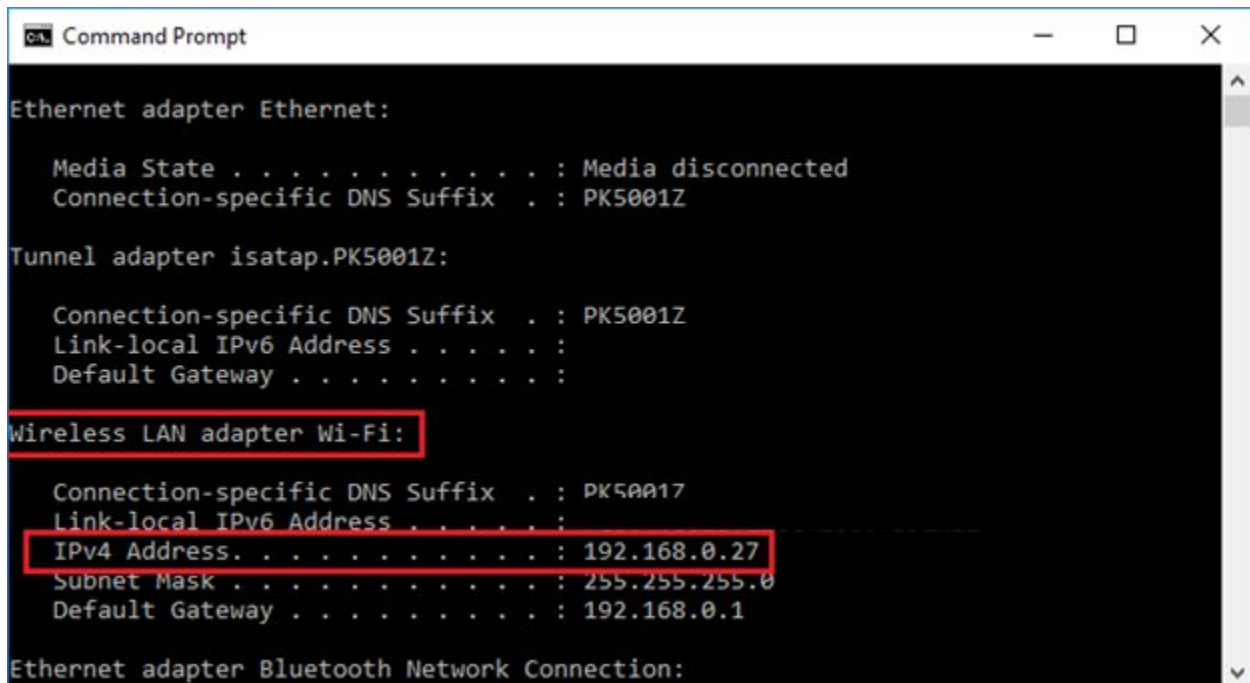
Once the password is accepted then you should be seeing the Windows desktop and you can enable wireless access.

When the Bridge ships wireless is disabled. Enabling wireless on the Bridge is the same as setting up wireless on any Windows 10 computer and there are lots of web references to help if you have not done it before. Search for “enable wireless Windows 10”. Here are some brief instructions:

In the Windows desktop, click on the *Windows* button in the lower left corner to open the menu. Click on the *Settings* icon – right above the power icon. In the *Settings* dialog click on the *Network and Internet* tool. Enable wireless and then choose your wireless network and wherever password is needed.

If all else fails...

If you can't connect the Bridge to a wired connection even only temporarily, then TeamViewer will not work. The only way to proceed is to connect a monitor, keyboard, and mouse to the Bridge and interact with Windows to enable wireless connectivity and get the Bridge wireless access to your network. Once you have done that then the Bridge software should be able to locate it. But since you are there already, start a CMD prompt to determine the IP address of the Bridge by using the ipconfig command and write down the IP address associated with the Wireless adapter.



```
Command Prompt

Ethernet adapter Ethernet:

    Media State . . . . . : Media disconnected
    Connection-specific DNS Suffix  . : PK5001Z

Tunnel adapter isatap.PK5001Z:

    Connection-specific DNS Suffix  . : PK5001Z
    Link-local IPv6 Address . . . . . :
    Default Gateway . . . . . :

Wireless LAN adapter Wi-Fi:

    Connection-specific DNS Suffix  . : PK5001Z
    Link-local IPv6 Address . . . . . :
    IPv4 Address. . . . . : 192.168.0.27
    Subnet Mask . . . . . : 255.255.255.0
    Default Gateway . . . . . : 192.168.0.1

Ethernet adapter Bluetooth Network Connection:
```

Once wireless is enabled and you know the IP address you can power cycle the Bridge by powering it down and restarting. Just pull the power adapter out, unplug the monitor, keypad, and mouse, wait a few seconds, then plug it back in.

##end##